

## Lifting pins

Steel / Stainless Steel, Self-locking

### SPECIFICATION

#### Version in Steel

Steel **ST**

- Stud, shackle
- Heat-treated, manganese phosphated

#### Version in Stainless Steel

Stainless Steel **NI**

- Stud AISI 630
- Precipitation hardened
- Shackle AISI 316Ti
- Push button Aluminum, red anodized
- Spring Stainless Steel



### INFORMATION

Lifting pins GN 1130 are carrier elements designed for fast and easy use. Pressing the red aluminium button will release the locking effect of the locking ball, allowing the load bolt to be moved in or out of the holding bore hole. The shackle rotates by at least 180°, with a safety flange fitted as a safeguard against inadvertent operation. Depending on the direction of pull, the ball load bolt may move freely by 360° in the holding bore hole.

Sling and lifting gear permanently remaining at the workpiece (e.g. load rings) is no longer necessary. Holding bore holes with  $d_1$  H11 are sufficient in use with corresponding strength of materials.

Furthermore, the holding bushings GN 1132 (see page 1098) are also available.

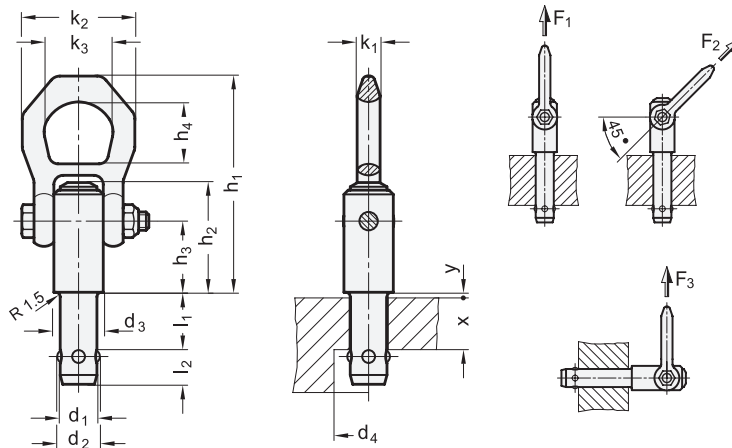
For more user guidelines, see the operating instruction enclosed with every lifting pin.

### TECHNICAL INFORMATION

- Stainless Steel Characteristics (see page A26)

### ACCESSORY

- Holding Bushings GN 1132 (see page 1098)





Machine elements

GN 1130

Description	d1 -0.04/-0.08	l1 +1	d2	d3	d4 min.	h1	h2	h3	h4	k1	k2	k3	l2	x min.	y	Nominal load in kN F1	Nominal load in kN F2	Nominal load in kN F3	⚖️
GN 1130-8-10-ST	8	10	9.35	21.5	9.9	87.5	38.5	25.7	27	9.5	49	30	8.75	5	1.5	1.5*	1.2*	0.5*	220
GN 1130-8-15-ST	8	15	9.35	21.5	9.9	87.5	38.5	25.7	27	9.5	49	30	8.75	5	1.5	1.5*	1.2*	0.5*	226
GN 1130-8-25-ST	8	25	9.35	21.5	9.9	87.5	38.5	25.7	27	9.5	49	30	8.75	10	1.5	1.5*	1.2*	0.5*	229
GN 1130-8-35-ST	8	35	9.35	21.5	9.9	87.5	38.5	25.7	27	9.5	49	30	8.75	20	1.5	1.5*	1.2*	0.5*	232
GN 1130-10-15-ST	10	15	11.7	21.5	12.2	87.5	38.5	25.7	27	9.5	49	30	10.2	5	1.5	2.7*	2.4*	2.1*	227
GN 1130-10-25-ST	10	25	11.7	21.5	12.2	87.5	38.5	25.7	27	9.5	49	30	10.2	15	1.5	2.7*	2.4*	2.1*	236
GN 1130-10-35-ST	10	35	11.7	21.5	12.2	87.5	38.5	25.7	27	9.5	49	30	10.2	25	1.5	2.7*	2.4*	2.1*	243
GN 1130-10-50-ST	10	50	11.7	21.5	12.2	87.5	38.5	25.7	27	9.5	49	30	10.2	40	1.5	2.7*	2.4*	2.1*	252
GN 1130-12-15-ST	12	15	14.2	21.5	14.7	87.5	38.5	25.7	27	9.5	49	30	11	5	1.5	3.5*	3.2*	2.8*	243
GN 1130-12-25-ST	12	25	14.2	21.5	14.7	87.5	38.5	25.7	27	9.5	49	30	11	10	1.5	3.5*	3.2*	2.8*	247
GN 1130-12-35-ST	12	35	14.2	21.5	14.7	87.5	38.5	25.7	27	9.5	49	30	11	20	1.5	3.5*	3.2*	2.8*	258
GN 1130-12-50-ST	12	50	14.2	21.5	14.7	87.5	38.5	25.7	27	9.5	49	30	11	35	1.5	3.5*	3.2*	2.8*	267
GN 1130-16-25-ST	16	25	18.6	25	19.2	92.8	47.5	31	27	9.5	49	30	15.1	10	1.5	4.8*	4.5*	4.1*	318
GN 1130-16-50-ST	16	50	18.6	25	19.2	92.8	47.5	31	27	9.5	49	30	15.1	15	1.5	4.8*	4.5*	4.1*	350
GN 1130-16-75-ST	16	75	18.6	25	19.2	92.8	47.5	31	27	9.5	49	30	15.1	35	1.5	4.8*	4.5*	4.1*	392
GN 1130-20-50-ST	20	50	24.5	30	25	114	55.9	36.5	32.6	11	56	36	19.7	25	1.5	10*	8.5*	6.5*	440
GN 1130-20-75-ST	20	75	24.5	30	25	114	55.9	36.5	32.6	11	56	36	19.7	45	1.5	10*	8.5*	6.5*	480

GN 1130-NI

STAINLESS STEEL

Description	d1 -0.04/-0.08	l1 +1	d2	d3	d4 min.	h1	h2	h3	h4	k1	k2	k3	l2	x min.	y	Nominal load in kN F1	Nominal load in kN F2	Nominal load in kN F3	⚖️
GN 1130-8-10-NI	8	10	9.35	21.5	9.9	87.5	38.5	25.7	27	9.5	49	30	8.75	5	1.5	1.5*	1.2*	0.5*	228
GN 1130-8-15-NI	8	15	9.35	21.5	9.9	87.5	38.5	25.7	27	9.5	49	30	8.75	5	1.5	1.5*	1.2*	0.5*	229
GN 1130-8-25-NI	8	25	9.35	21.5	9.9	87.5	38.5	25.7	27	9.5	49	30	8.75	10	1.5	1.5*	1.2*	0.5*	233
GN 1130-8-35-NI	8	35	9.35	21.5	9.9	87.5	38.5	25.7	27	9.5	49	30	8.75	20	1.5	1.5*	1.2*	0.5*	236
GN 1130-10-15-NI	10	15	11.7	21.5	12.2	87.5	38.5	25.7	27	9.5	49	30	10.2	5	1.5	2.7*	2.4*	2.1*	233
GN 1130-10-25-NI	10	25	11.7	21.5	12.2	87.5	38.5	25.7	27	9.5	49	30	10.2	15	1.5	2.7*	2.4*	2.1*	238
GN 1130-10-35-NI	10	35	11.7	21.5	12.2	87.5	38.5	25.7	27	9.5	49	30	10.2	25	1.5	2.7*	2.4*	2.1*	260
GN 1130-10-50-NI	10	50	11.7	21.5	12.2	87.5	38.5	25.7	27	9.5	49	30	10.2	40	1.5	2.7*	2.4*	2.1*	255
GN 1130-12-15-NI	12	15	14.2	21.5	14.7	87.5	38.5	25.7	27	9.5	49	30	11	5	1.5	3.5*	3.2*	2.8*	242
GN 1130-12-25-NI	12	25	14.2	21.5	14.7	87.5	38.5	25.7	27	9.5	49	30	11	10	1.5	3.5*	3.2*	2.8*	253
GN 1130-12-35-NI	12	35	14.2	21.5	14.7	87.5	38.5	25.7	27	9.5	49	30	11	20	1.5	3.5*	3.2*	2.8*	260
GN 1130-12-50-NI	12	50	14.2	21.5	14.7	87.5	38.5	25.7	27	9.5	49	30	11	35	1.5	3.5*	3.2*	2.8*	268
GN 1130-16-25-NI	16	25	18.6	25	19.2	92.8	47.5	31	27	9.5	49	30	15.1	10	1.5	4.8*	4.5*	4.1*	316
GN 1130-16-50-NI	16	50	18.6	25	19.2	92.8	47.5	31	27	9.5	49	30	15.1	15	1.5	4.8*	4.5*	4.1*	355
GN 1130-16-75-NI	16	75	18.6	25	19.2	92.8	47.5	31	27	9.5	49	30	15.1	35	1.5	4.8*	4.5*	4.1*	398
GN 1130-20-50-NI	20	50	24.5	30	25	114	55.9	36.5	32.6	11	56	36	19.7	25	1.5	10*	8.5*	6.5*	398
GN 1130-20-75-NI	20	75	24.5	30	25	114	55.9	36.5	32.6	11	56	36	19.7	45	1.5	10*	8.5*	6.5*	438

\* with 5-fold anti-fracture safety